

# SP-Stativ

Tripods for geometrical measurement applications

SP STATIV-01 – SP STATIV-04



SP STATIV-VP CARBON

## Technical Data

### SP TRIPOD-01

<b>Type:</b>	light-weight tripod
<b>Weight:</b>	5 kg
<b>Adapter:</b>	socket adapter Ø 34 mm
<b>Adjustment height:</b>	545 – 935 mm
<b>Laser height*:</b>	715 – 1105 mm

### SP TRIPOD-01,5

<b>Type:</b>	heavy-duty tripod
<b>Weight:</b>	11 kg
<b>Adapter:</b>	socket adapter Ø 34 mm
<b>Adjustment height:</b>	760 – 1450 mm
<b>Laser height*:</b>	930 – 1620 mm

### SP TRIPOD-02

<b>Type:</b>	heavy-duty tripod
<b>Weight:</b>	12 kg
<b>Adapter:</b>	socket adapter Ø 34 mm
<b>Adjustment height:</b>	870 – 1900 mm
<b>Laser height*:</b>	1040 – 2070 mm

### SP TRIPOD-03

<b>Type:</b>	heavy-duty tripod
<b>Weight:</b>	18 kg
<b>Adapter:</b>	socket adapter Ø 34 mm
<b>Adjustment height:</b>	1160 – 2520 mm
<b>Laser height*:</b>	1330 – 2690 mm

### SP TRIPOD-04

<b>Type:</b>	heavy-duty tripod
<b>Weight:</b>	20 kg
<b>Adapter:</b>	socket adapter Ø 34 mm
<b>Adjustment height:</b>	1880 – 3910 mm
<b>Laser height*:</b>	2050 – 4080 mm

### SP TRIPOD-VP CARBON

<b>Type:</b>	light-weight tripod
<b>Weight:</b>	5 kg
<b>Adapter:</b>	suitable for Toolkit
<b>Adjustment height:</b>	80 – 2400 mm
<b>Laser height:</b>	180 – 2500 mm

\* The laser height refers to a laser T330 mounted on a mounting adapter BG 830205 on a socket adapter SP TripodSZ1.

## Special tripods



### SP STATIV-005

<b>Type:</b>	Low-Level tripod
<b>Weight:</b>	2,1 kg
<b>Adapter:</b>	Thread bolt M8
<b>Adjustment height:</b>	95 – 285 mm
<b>Laser height:</b>	260 – 450 mm

### SP STATIV-KL50

<b>Type:</b>	Clamp stand
<b>Weight:</b>	8 kg
<b>Adapter:</b>	socket adapter Ø 34 mm
<b>Adjustment height:</b>	370 mm

## Tripod accesories



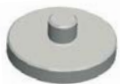
### SP STATIV-SZ1 socket adapter 5/8"

<b>Type:</b>	Tripod adapter
<b>Disc- Ø:</b>	65 mm
<b>socket adapter- Ø:</b>	34 mm
<b>Adapter:</b>	Thread bolt 5/8"
<b>Mounted height:</b>	16,5 mm



### BG 832030 socket adapter M8 rotatable

<b>Type:</b>	Tripod adapter
<b>Disc- Ø:</b>	50 mm
<b>socket adapter- Ø:</b>	34 mm
<b>Adapter:</b>	Thread bolt M8
<b>Mounted height:</b>	32 mm



### BT 948355 Adapter M8 – 5/8"

<b>Type:</b>	Tripod adapter
<b>Disc- Ø:</b>	60 mm
<b>Thread:</b>	M8
<b>Adapter:</b>	Thread bolt 5/8"
<b>Mounted height:</b>	10 mm



### SP STATIV-VL25

<b>Type:</b>	Tripod Extension
<b>Weight:</b>	0,5 kg
<b>Extension length:</b>	250 mm
<b>Adapter:</b>	socket adapter Ø 34 mm

### SP STATIV-VL50

<b>Type:</b>	Tripod Extension
<b>Weight:</b>	0,7 kg
<b>Extension length:</b>	500 mm
<b>Adapter:</b>	socket adapter Ø 34 mm

This document was prepared with the utmost of care. Changes and errors cannot be completely avoided.